

Doggie Doggie

(Where's Your Bone?)

drums set-up, then 4 measures (8 beats)
introduction on recording

Traditional
arr. Paul Jennings



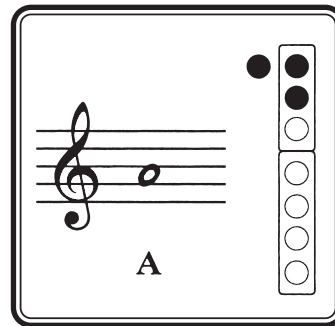
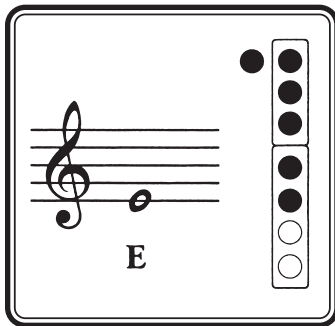
Dog - gie, dog - gie where's your bone? Some-one stole it from your home.



Who stole the bone? _____ I stole the bone. _____

- To make this song easier, practice fingering E to A numerous times before playing the entire song.

Featured notes:



Things to know:

- Remember in 2/4 Time Signature – there are only 2 beats per measure.



two eighth notes = 1 beat

Quick Fact about “Doggie Doggie”:

- This is a traditional children’s game song known throughout the country.